

pulse-clean dust extractor units



EXEON
CLEAN AIR FOR INDUSTRY

*Powerful and top quality
pulse-clean dust control units*

THE OX™ RANGE



Engineering at its finest

OX is an ultimate quality range of reverse-pulse cleaning extractor units.



Uses compressed air to create a temporary localised reverse-flow of air to clean off the filter elements, enabling continuous on-line operation in the most demanding of conditions.



Extremely tough and built to last from 3mm steel sheet bodies finished with 2-coat paint enamel gloss finish, and welded rolled steel framework supports where supplied. Stainless construction also available.



Low maintenance with high-quality controls and construction and easily accessed filter banks.

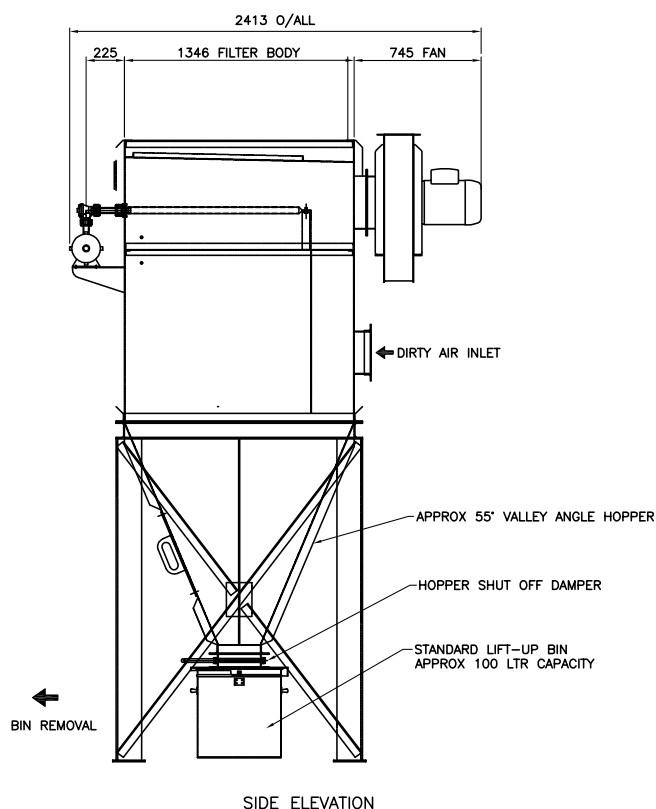
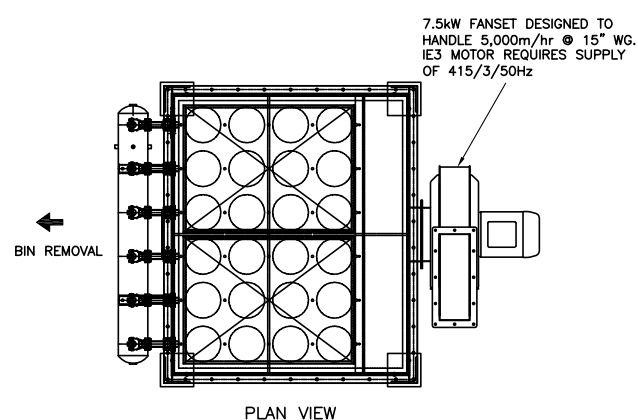


Versatile – a wide range of sizes and configurations.

Other high-quality construction and features include:

- Robust welded steel construction
- Range of filter media available to suit different applications
- Certified compressed air header tank
- Range of fans to suit required air volume and pressure
- Solid-state PCB control with electronic timer for adjustable valve sequence control
- Highly efficient pulse jet cleaning system
- Compact physical size
- Options include stainless steel construction, weatherproof and ATEX versions
- Explosion panels (where fitted) compliant to ATEX/EN14797/NFPA68
- Disposal systems can be bin, rotary valve to hopper or valley hopper/screw.

Bespoke CAD drawings provided with each unit



EXEON can assist with selecting a suitable unit for your system, please contact our Sales Dept for further details.

Ox™ PAD

Classic flat-pad filter element unit from polyester needlefelt for demanding applications such as aggregates, metals, grain.

The filter design is superior in removing heavy dust cakes due to the flexibility of the flat sides, yet the design is very compact and allows for a high media area in a small footprint.

Also available in **Insertable** format for venting applications.



Ox™ PLEAT

The Jet range uses pleated cartridge filter elements for maximising plant size to air volume ratio. Suitable for dry free-flowing dusts in low concentrations. Ideal for high volume applications where units are more compact and lower-cost than a bag filter with an equivalent flow rate. The cartridges can offer excellent lifespans when correctly applied. Single-cartridge venting units are also available.



Ox™ TUBE

Tubular filter element from polyester needlefelt for high volume low density dusts such as wood and paper.

Standard size range from 100m² to 360m² but much larger versions are possible.



The Exeon® products are a high-quality range of LEV equipment which include the following:

Extraction arms



Dust collectors



Mobile extractors



Extraction bench



Extract fans



Pulse units



Suitable for most industries, including:

- Metalwork and welding
- Food
- Wood Products
- Solvent and other fumes
- Paint
- Plastic and rubber products
- Precious metals
- Pharmaceuticals
- Glass industry
- Textiles
- Chemicals
- Stone and aggregates

TO SEE THE RANGE, ASK FOR A FREE SITE VISIT FROM OUR DISPLAY VAN

EXEON®
CLEAN AIR FOR INDUSTRY

Exeon Limited // Unit 6 Fen End // Stotfold // Hitchin // Herts // SG5 4BA
t 01462 410010 // e sales@exeon.co.uk // w www.exeon.co.uk